



## Vision

To be recognized worldwide for our work in saving lives through enabling smarter enforcement, changing driver behavior for the better and ensuring those who break the law are dealt with effectively.

## Mission

To have a sustainable, efficient safe and internationally comparable quality of road infrastructure in general and National Highways infrastructure in particular to achieve enhanced connectivity, quick mobility to a level which accelerate social-economic development,

## Road Of Life

For the safety, we should always give priority to quality and ensure about the same.

Competetion should be in Quality rather than the price only, because life is priceless.



## Metal Beam Crash Barrier

- Single side Single Barrier.
- Single side Double Barrier.
- Double side Single Barrier.
- Double side Double Barrier.





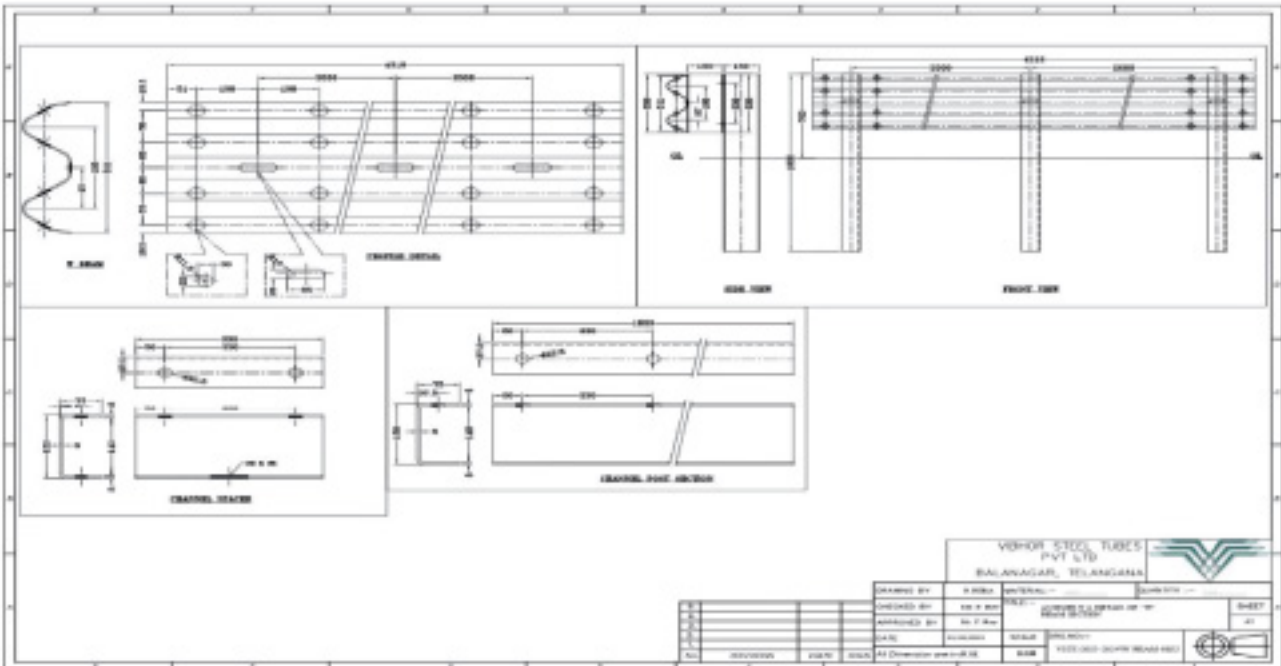
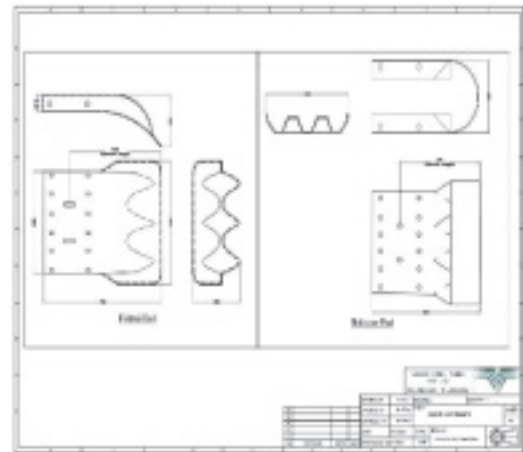
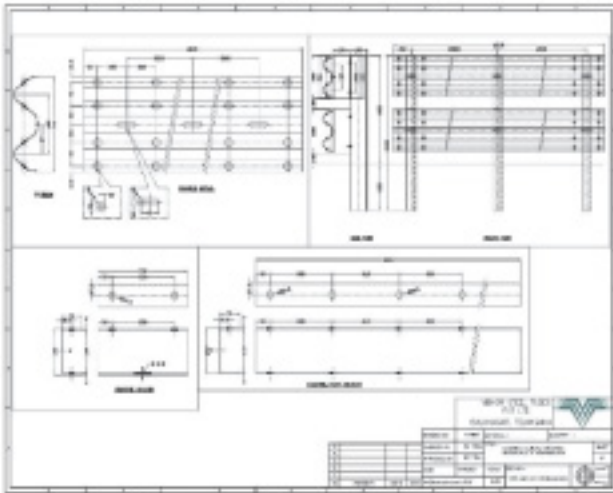
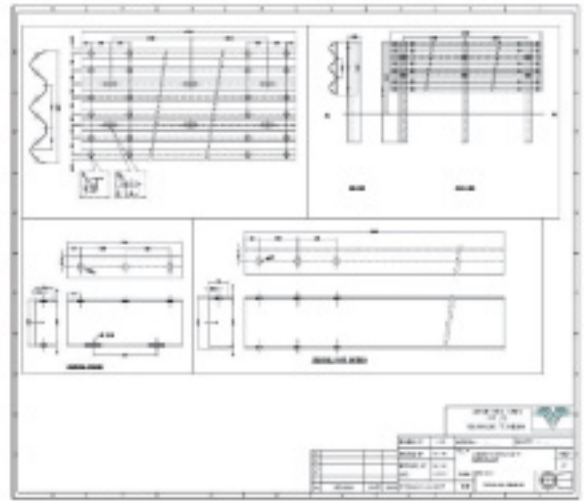
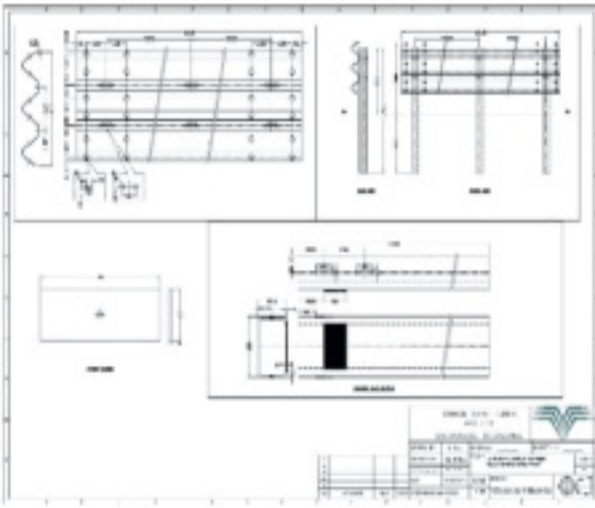
## Specifications:

- Cold roll formed in thickness 3mm/2.8mm/2.6mm
- Raw materials conforming to 5986/2062/10748 or equivalent of grade.
- Fe 250/ Fe 350/ Fe 410/ Fe 510
- Hot deep galvanized to 550gsm/sq.m
- Overall Length 4318 mm/ 3318mm/ as per customized drawing.
- Effective Length: 4000mm/3000mm
- Fastner as per IS: 1363, 1367
- Tolerance as per IS: 1852



## Product Details and Advantages:

- **Vibhor Steel Tubes Ltd.-** Metal Beam Crash Barrier has wide applications and is used on median, shoulders, verge and high embankment.
- Safer than rigid barrier as the impact to errant vehicle is much lower on account of resilience of the metal beam.
- Maintenance is very fast as only the damaged posts beam are taken out from the socketed foundation and replaced with new post and beam is placed in respective position. Normally, beam post doesn't break or damaged even after impact from much heavier/ bigger vehicle.
- Lower Maintenance Cost.
- Zinc coated Barrier means Long-life with low cost.
- Conventional Barriers are more safe from other barriers.





---

# Quality Policy



The company follows a stringent quality policy with a robust quality management system and is accredited with ISO 9001:2015 certifications, besides being TUV certified for International standards. A technically sound and strict quality check is carried out at all stages, right from procuring high-end raw material from noted suppliers like SAIL and JSW, through the manufacturing process, right till the ISI- marked end product is well delivered. Raw material is inspected for various width and thickness within the specification tolerance.

# Standards



## Compliance with Stringent Safety Norms

- Conforming to Indian and Global Standards.
- The metal beam crash barrier manufactures by crash tested and compiles with both Indian and International Standards.
- Conforms to Indian Standard and Specifications and Guidelines notified by IRC & MORTH.
- 5th edition of MORTH (Ministry of Road and Highways) code in 2013
- IRC: 119:2015:Guidelines for Traffic Safety Barriers
- IRC: SP:73:2015:Manual of Specifications & Standards for 2 laning of highways through PPP.

# International Standards



## Conforming to International Standards

---

- American Standard NCHRP 350 for TL3 & TL4
- European Standard: EN1317-2
- Containment levels of N2, H1 & H2.

---

Most effective safety solution.



**A Strong Supporter Towards A Brighter Future.**

---





# VIBHOR STEEL TUBES LTD.

## Works/ Office

Udithyala (V), Balanagar  
(m),  
Mahabubhanagar(Dist.),  
Telangana State - 509202

## Contact Us

+91-8420642517, +91-7054031333

## Email

[hdmkt@vstlindia.com](mailto:hdmkt@vstlindia.com)

## Website

[www.vstlindia.com](http://www.vstlindia.com)

**VIBHOR STEEL TUBES LTD.**